

# TIPS EVERY DRIVER SHOULD KNOW



## CAR GUIDE

COMPILED SAFETY INFORMATION ABOUT TIRE PRESSURE,  
HOW TO JUMP A CAR AND MORE.

[TEXANINSURANCE.COM](http://TEXANINSURANCE.COM)



# THE COMPLETE CAR DASHBOARD LIGHT GUIDE

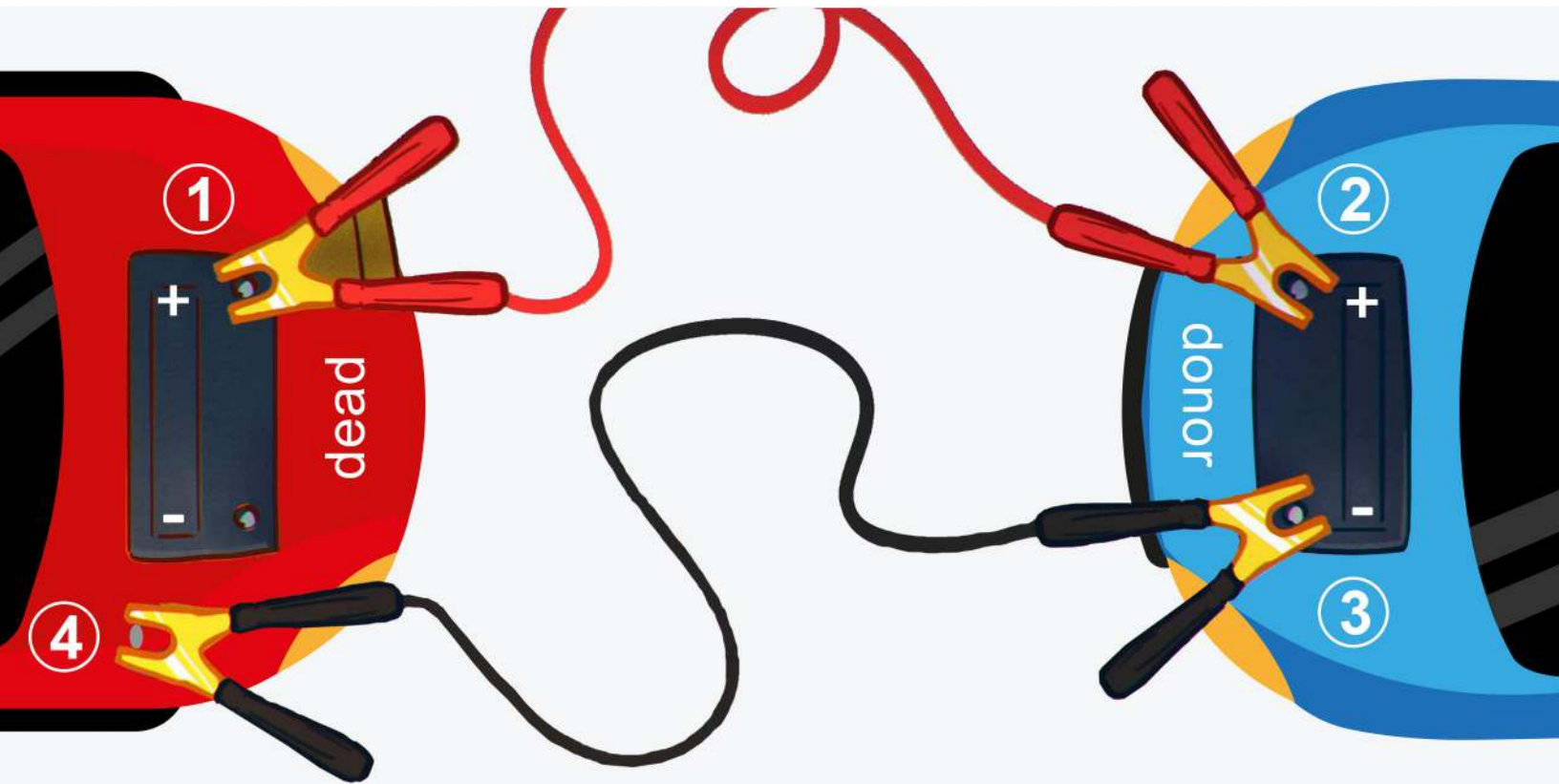
- |                                 |                                       |                                 |                               |
|---------------------------------|---------------------------------------|---------------------------------|-------------------------------|
| 1) Fog light (front)            | 15) Key fob battery low               | 29) Catalytic converter warning | 47) Hill descent control      |
| 2) Power steering warning light | 16) Distance warning                  | 30) Seat belt not on            | 48) Temperature warning       |
| 3) Fog light (rear)             | 17) Press clutch pedal                | 31) Parking brake light         | 49) ABS warning               |
| 4) Washer fluid low             | 18) Press brake pedal                 | 32) Battery/alternator warning  | 50) Fuel filter warning       |
| 5) Brake pad warning            | 19) Steering lock warning             | 33) Parking assist              | 51) Door open                 |
| 6) Cruise control on            | 20) Main beam headlights              | 34) Service required            | 52) Bonnet open               |
| 7) Direction indicators         | 21) Tyre pressure low                 | 35) Adaptive lighting           | 53) Low fuel                  |
| 8) Rain and light sensor        | 22) Sidelight information             | 36) Headlight range control     | 54) Automatic gearbox warning |
| 9) Winter mode                  | 23) Exterior light fault warning      | 37) Rear spoiler warning        | 55) Speed limiter             |
| 10) Information indicator       | 24) Brake lights warning              | 38) Convertible roof warning    | 56) Suspension dampers        |
| 11) Glow plug/diesel pre-heat   | 25) Diesel particulate filter warning | 39) Airbag warning              | 57) Oil pressure low          |
| 12) Frost warning               | 26) Trailer tow hitch warning         | 40) Handbrake warning           | 58) Windscreen defrost        |
| 13) Ignition switch warning     | 27) Air suspension warning            | 41) Water in fuel filter        | 59) Boot open                 |
| 14) Key not in vehicle          | 28) Lane departure warning            | 42) Airbag deactivated          | 60) Stability control off     |
|                                 |                                       | 43) Fault problem               | 61) Rain sensor               |
|                                 |                                       | 44) Dipped beam headlights      | 62) Engine/emissions warning  |
|                                 |                                       | 45) Dirty air filter            | 63) Rear window defrost       |
|                                 |                                       | 46) Eco driving indicator       | 64) Auto windscreen wiping    |





# HOW TO JUMP A CAR

Begin with both cars off



1. Red on **dead +**
2. Red on **donor +**
3. Black on **donor -**
4. Black on **dead bare metal**
5. Start **donor**
6. Start **dead**
7. Remove 4-3-2-1



# HOW TO CHECK YOUR TIRE PRESSURE

Properly Inflated Tires Keep You Safe



## 1 FIND THE RIGHT TOOLS

The pen tire pressure gauge is a low-cost tool you can store in your door pocket or glove box. You can buy a pen tire pressure gauge on Amazon or at a hardware retailer near you.

TIRE AND LOADING INFORMATION RENSEIGNEMENTS SUR LES PNEUS ET LE CHARGEMENT			
SEATING CAPACITY / NOMBRE DE PLACES		TOTAL X	FRONT X REAR AVANT X ARRIERE
The combined weight of occupants and cargo should never exceed XXX kg or XXX lb.* Le poids total des occupants et du chargement ne doit jamais dépasser XXX kg ou XXX lb.*			
TIRE PNEU	SIZE DIMENSIONS	COLD TIRE PRESSURE PRESSION DES PNEUS A FROID	
FRONT AVANT	XXXX/XXXXX	XXX kPa, XX psi	
REAR ARRIERE	XXXX/XXXXX	XXX kPa, XX psi	
SPARE DE SECOURS	XXXX/XXXXX	XXX kPa, XX psi	

SEE OWNER'S MANUAL FOR ADDITIONAL INFORMATION  
VOIR LE MANUEL DE L'USAGER POUR PLUS DE RENSEIGNEMENTS

## 2 DETERMINE YOUR PSI

Inside the driver's door jam, there is a "tire information placard" This chart will tell you how much weight your car can hold and the recommended size and inflation pressures for your tires.



## 3 CHECK YOUR PRESSURE

Place the round end of the pen-style tool onto the valve stem and lightly push down on the gauge. Immediately, a measuring stick will pop out from the bottom of the pen and indicate the current PSI of your tire.

### WHAT'S THE PSI?



If the number is lower than the recommended pressure, you will need to add air to increase the PSI of your tire.

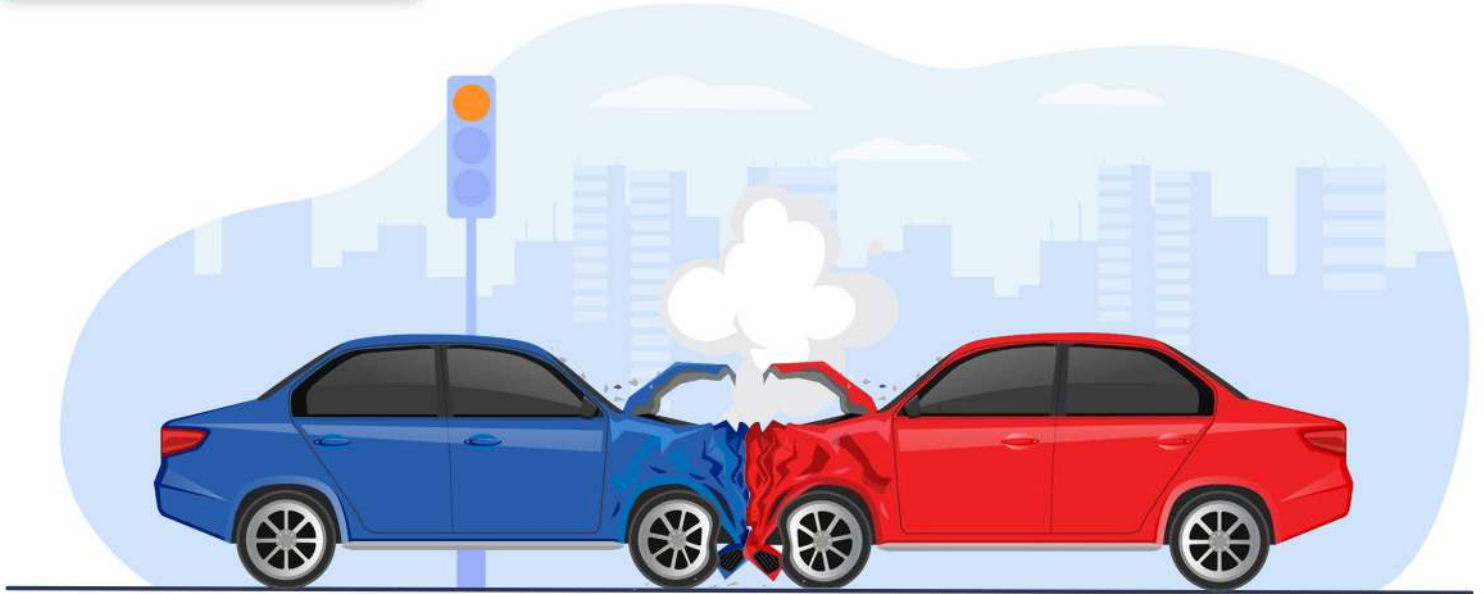


If the number is too high, you can use your pen-style tire pressure gauge to release air from your tire.



# CAR ACCIDENT CHECKLIST

Download & keep in car for emergencies



## CAR ACCIDENT INFORMATION

### Accident Checklist

- Check for injuries. Call 911 for emergencies if needed
- If damage is minor, move cars to the side of the road to avoid blocking traffic
- Exchange information with other driver
- Collect contact info from witnesses and passengers in vehicles involved
- Take pictures of vehicles, damage, and accident scene from different angles
- Call your insurance company

### Do Not

- Don't leave the scene if police have been called and are on the way
- Don't lose your temper, remain calm
- Don't sign anything from the other party
- Don't discuss details about the accident except with the police
- Don't admit fault or cast blame



# CAR ACCIDENT CHECKLIST

Download & keep in car for emergencies

## Police Info

Name of Officer \_\_\_\_\_  
Department \_\_\_\_\_  
Badge # \_\_\_\_\_  
Phone \_\_\_\_\_  
Police report # \_\_\_\_\_

## ABOUT THE ACCIDENT

Date \_\_\_\_\_ Time of Day \_\_\_\_\_  
Location \_\_\_\_\_  
Car Make/Model/Year \_\_\_\_\_  
License Plate \_\_\_\_\_  
Note weather conditions, road conditions, or anything out of the ordinary.  
What happened? \_\_\_\_\_  
\_\_\_\_\_  
\_\_\_\_\_  
\_\_\_\_\_  
\_\_\_\_\_  
\_\_\_\_\_  
\_\_\_\_\_

## Driver Info

Name \_\_\_\_\_  
Phone \_\_\_\_\_  
Address \_\_\_\_\_  
Email \_\_\_\_\_  
Driver License State \_\_\_\_\_  
Driver License # \_\_\_\_\_

## Witnesses/Passengers

Name \_\_\_\_\_  
Number \_\_\_\_\_  
Email \_\_\_\_\_

## Insurance Info

Company \_\_\_\_\_  
Policy # \_\_\_\_\_  
Phone \_\_\_\_\_